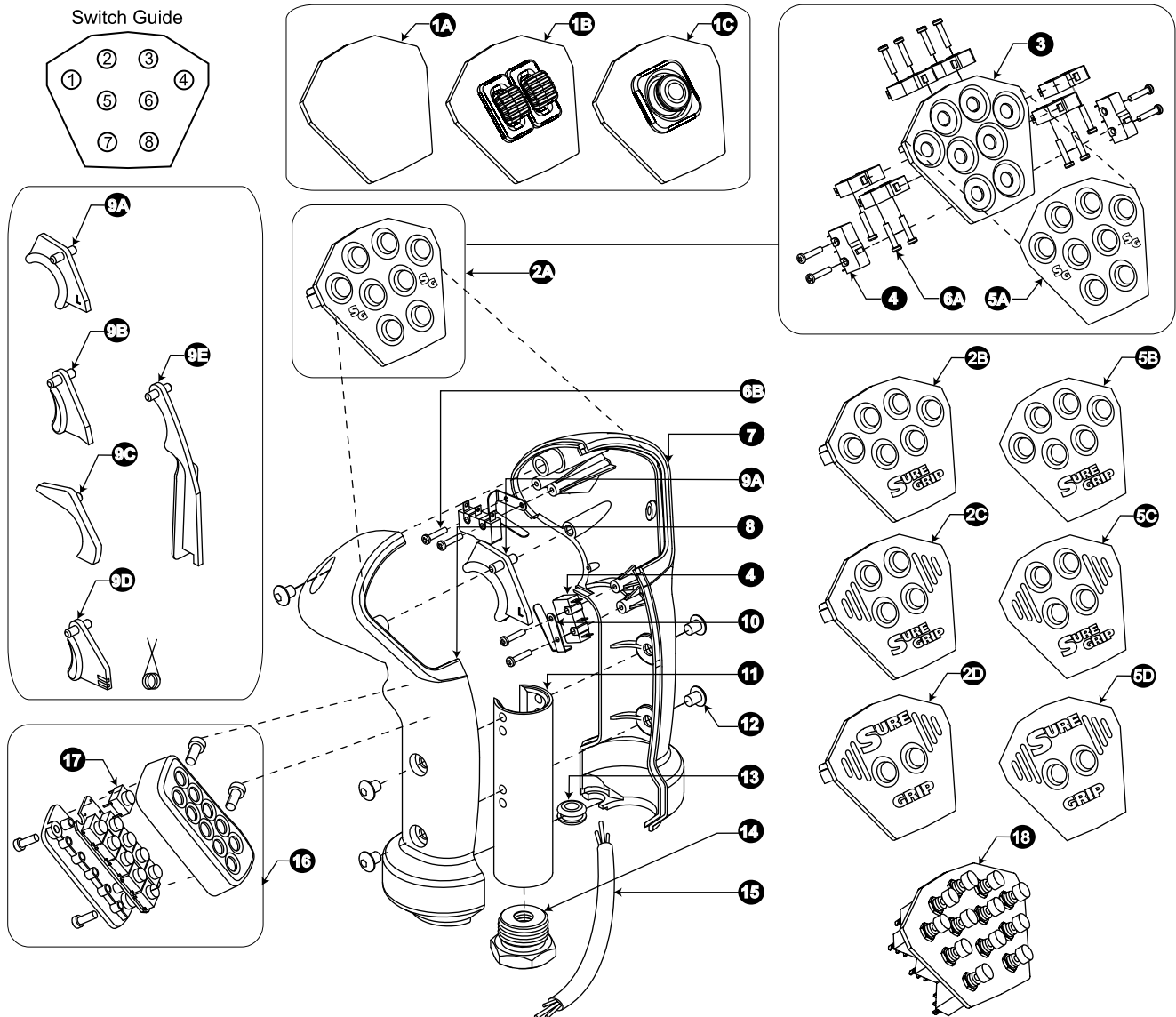


L Handle Parts List

#4-1413 McGill Road Fax: (250) 374-1099
 Kamloops B.C. Canada V2C 6K7 Toll Free: 1-800-831-2278
 Ph: (250) 374-2278 www.suregripcontrols.com

SURE GRIP
 CONTROLS INC.



FLG	PART#	DESCRIPTION	FLG	PART#	DESCRIPTION
1A	L-FP-00	"L" Blank Faceplate	7 8	L-HLR-Kit-B	"L" Handle Case Upgrade Kit Assy. - Black(Grey)
1B	L-FP-E	"L" Series Dual Slider Module (Call Factory)	9A	L-TR-02	"L" Double Trigger
1C	L-FP-E-J	"L" Series Dual Axis Micro Joystick (Call Factory)	9B	L-TR-01	"L" Single Trigger
2A	L-FP-A8	"L" 8 Switch Pack Assy.	9C	L-TR-00	"L" Trigger Insert
2B	L-FP-A6	"L" 6 Switch Pack Assy.	9D	TR-P1-A	Proportional Trigger/Spring Assy.
2C	L-FP-A4	"L" 4 Switch Pack Assy.	9E	TR-D1-G	Deadman Trigger Lever - Grey (Black)
2D	L-FP-A2	"L" 2 Switch Pack Assy.	10	LS-00	Leaf Spring for Trigger
3	L-FP-01	"L" Series Empty Faceplate	11	PN-03	Mounting Pin "L/S"
4	SW-00	Handle Switch, L/S	12	SC-02SS	10-32 x 3/8" Capscrew - Button Head
5A	L-ME-A8	"L" 8 Button Overlay	13	GR-01	3/8" x 1/4" Grommet
5B	L-ME-A6	"L" 6 Button Overlay	14	BU-00	Adapter Bushing - 1/4" Hole (See Page 5)
5C	L-ME-A4	"L" 4 Button Overlay	15	L2-M2-W	"L" Handle 2 Button Faceplate Wire Harness
5D	L-ME-A2	"L" 2 Button Overlay		L2-M4-W	"L" Handle 4 Button Faceplate Wire Harness
6A	SC-03	2 x 7/16" Tapping Screw - Pan Head (Faceplate)		L2-M6-W	"L" Handle 6 Button Faceplate Wire Harness
6B	SC-21	2 x 9/16" Tapping Screw - Pan Head (Trigger)		L2-M8-W	"L" Handle 8 Button Faceplate Wire Harness
7	L-HL-R-G	"L" Handle Case Right - Grey (Black)	16	KP-10L1	Keypad 10 Button, (Fits Left Handle)
	(L-HL-02 Handle Case Right - Old Style)			KP-10R1	Keypad 10 button, (Fits Right Handle)
8	L-HL-L-G	"L" Handle Case Left - Grey (Black)	17	SW-07	Key Pad Switch
	(L-HL-01 Handle Case Left - Old Style)		18	L-FP-A-B12	12 button "L" series faceplate assembly